



Clavinova®



DIGITAL
PIANO

CLP, CSP &
CVP SERIES

YAMAHA: A NAME BUILT ON FASCINATION

Playing a Yamaha piano is more than just musical expression or creative discovery: it's connecting more than 130 years of uncompromising craftsmanship, engineering excellence and a dedication to the beauty in life. That Yamaha pianos are world-renowned for their precision is no coincidence: after all, our founder was a trained watchmaker, whose eye for detail set the high standards for excellence that are seen and enjoyed today. Whether classic or digital, the creation of all Yamaha pianos comes down to expert craftsmanship from the finest raw materials to the very latest in audio technology and new connectable innovation. Only after passing the toughest of quality controls is a Yamaha piano ready to become enrich the lives of players around the world.

TECHNOLOGY MEETS TRADITION

Mixing tradition with technology has always been a driving force at Yamaha. This is seen in the harmonious integration of cutting-edge digital innovation embedded in timeless classic piano forms. Keyboards that perfectly recreate the touch and feel of an acoustic instrument, the rich, on-demand sound of the Yamaha CFX and Bösendorfer Imperial grand pianos and a vast range of exceptional and versatile voices are just some of the many technological highlights that players can look forward to.



QUALITY FOR A LIFETIME OF MUSIC DEDICATION

A piano not only becomes a part of a player's life — but also a part of their household: this is why all Yamaha pianos are beautiful to look at with attention to design, profile and aesthetic appeal. Their fascinating form practically invites you to sit down and embark on a musical journey. Here, the craftsmanship and the age-old Japanese tradition of elevating manufacturing to an art form can be seen, felt and heard. The results are pianos of exceptional quality that are ready to give their owners years of playing pleasure. It's what makes a Yamaha piano not only an instrument but a part of the family.



**M O R E T H A N
1 3 0 Y E A R S
O F K N O W - H O W**

CRAFTING THE **PERFECT SOUND**



THE CHAMPION OF ACOUSTICS

Measuring the acoustic characteristics of speakers for digital pianos require an ideal environment, free of outside influences. An anechoic chamber nullifies these so-called “room acoustics” for optimal product development. Here, the motto is “the bigger, the better” which is why we have one of the largest anechoic chambers in the world, located at our headquarters in Hamamatsu. But measuring in an anechoic chamber is just the start. We also take various environmental differences in which the instrument will be used into account and make necessary adjustments. This ensures optimal acoustic results, regardless of the user’s environment.

FINE TUNES FOR FANTASTIC TONES

In the anechoic chamber, we tune all speakers, as well as measure their characteristics. This enables us to respond in real-time to all aspects affecting sound quality and finetune the final result via multiple anechoic chamber trips.

3D SOUND

A hemi-anechoic chamber is primarily used for practical testing of specific elements of an instrument during the development and testing of specific issues. Via a three-dimensional analysis of digital piano sound pressure, we can check how tones are emitted. Thus measurements and adjustments can be precisely made for authentic acoustic piano sound.



TRUE TO LIFE SOUND

Creating acoustic sounds as close to those of an acoustic piano goes beyond just a perfect reproduction. We also seek to capture all the elements of the hearing experience that an acoustic instrument provides, such as the impression of space.

EXPERIENCE THE CFX

In the recording studio, we compare digital pianos with their acoustic counterparts. The tone generator development team also uses this room for sampling piano sounds, which is why it is also home to a CFX, the finest concert grand piano that Yamaha makes. It is used for test performances by professional pianists, and acoustic measurements.



EXPERT OPINIONS

In perfecting every aspect and detail, we also bring world-class pianists to our headquarters to give their professional perspectives and unique insights. This valuable knowledge and year-long experience is collected to become a crucial part of the development process.

REAL GRAND EXPRESSION 2

REAL PIANOS REVEAL THE ESSENCE OF PIANO PLAYING

You want to play for as long as you can.
You want to branch out into new genres.
You want to express yourself in a way that's more... you.

Clavinova pianos satisfy the needs and desires
of piano lovers around the world.

The amazingly accurate grand piano-like feel is the result of the skills
and instincts Yamaha has developed through many years of manufacturing
acoustic pianos, paired with cutting-edge technology.

To experience the pure joy of playing the piano,
look no further than Clavinova.



CLP SERIES

Page **10**

CSP SERIES

Page **20**



CVP SERIES

26 Page

Insights
at Page

34

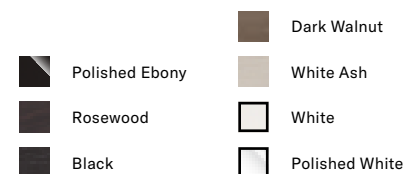
Enjoy	34
Design	36
Technology	38
Apps	44
Specifications	46

The choice is yours ...

CLP SERIES

Distilling the very essence of a grand piano into the feel, tone and touch that resonate with the aspiring pianist in you.

- Play the sound of two of the finest concert grands: the Yamaha CFX and the Bösendorfer Imperial.
- Enjoy the full sound of both concert grand pianos thanks to binaural sampling, even with headphones.



CLP-785



> P12



CLP-775



> P13



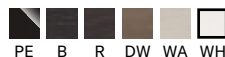
CLP-745



> P14



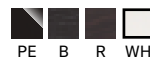
CLP-735



> P15



CLP-725



> P16



CLP-795GP



> P17



CLP-765GP



> P18

C S P SERIES

Introducing an innovative new way to enjoy the piano.

- Operate with your smart device.
- Start playing a song you like. Stream Lights will show you which keys to press.
- Enjoy performing with accompaniments, or even sing along!”



CSP-170



PE B WH

> P22



CSP-150



PE B WH

> P23



The Clavinova CSP Series has received the Red Dot Award: Product Design 2019. The Red Dot Design Award is one of the most highly respected design awards in the world.

C V P SERIES

Be a bandleader or conductor of an entire orchestra — the automatic accompaniment makes it possible!

- Discover an impressive selection of instrument sounds.
- Connect a microphone and sing along, e.g. karaoke.
- Use unstoppable learning features for beginners.



CVP-809GP



PE PWH

> P28



CVP-809



PE B PWH

> P29



CVP-805



PE B

> P30



CVP-701



PE B

> P31



* Some models and Colours (British Spelling) may not be available in certain areas.

CLP

SERIES

TURN YOUR LIVING ROOM INTO A PERFORMANCE VENUE FEATURING TOP-FLIGHT GRAND PIANOS

Revolutionary innovation

CLP-700 Series converts the slightest variations in touch into a limitless range of sound that captures your individuality as a musician. Thanks to the latest technology, CLP-700 Series is as expressive as grand pianos, and offer a more wonderful playing experience than ever before, taking your expectations of what a digital piano can do to higher heights.



Highly responsive GrandTouch™ / GrandTouch-S™ keyboards

The different sensations you feel in your fingertips when you play softly, vigorously, or anywhere in between are the product of responsiveness just like actual grand piano hammers striking strings. The greater dynamic range of the GrandTouch™ / GrandTouch-S™ keyboards create a feel very close to that of a grand piano.

Tonal expression delivered through touch on par with a grand piano

Grand Expression Modeling is cutting-edge technology that simulates the wide variety of tonal expression produced by the complex workings of the hammers, strings, dampers, and other internal components of a grand piano. The ability to produce different tonal qualities by varying dynamics and articulation teaches you how to control your fingertips to enhance the intricacy of your tonal expression. This magnifies the joy of playing and exposes you to the essence of piano playing.

Experience the distinct characteristics of two concert grand pianos

Yamaha used all-new samples for the voices of two world-class concert grand pianos — the bright, brilliant voice of the Yamaha CFX, and the warm, deep resonance of the Bösendorfer Imperial. The highly distinctive sounds of these pianos feature lush harmonics and vivid resonance created from the sympathetic vibrations of

the strings and soundboard, faithfully delivered in response to your articulation and pedaling. Richer tonal graduations provide you with an even greater range of dynamic expression.



Additionally, binaural sampling was used to create the voices of the two famed pianos. Even through headphones, the voices are natural and full, preserving the acoustic sound to such a degree that you forget that you're not hearing the sound straight from the instrument itself. Experience the ability to play an even broader range of songs the way they were meant to be played.

Acoustic design that realistically simulates the sound image of a grand piano

When you play a grand piano, you experience the sensation of being enveloped in the resonance of the instrument. The high-end models of the CLP-700 Series use Grand Acoustic Imaging — advanced acoustic technology that simulates the sound image and sound field of a grand piano. The technology recreates the full experience of playing a grand piano, with the sensation of the hammers striking the strings in front of you, the reverberations from the strings dissipating away from you, and the sense of depth that comes from the sound resonating from the soundboard. The key to creating such a realistic environment is the optimal placement and balance of the individual bass, mid and treble speakers, plus the addition of transducers. Each and every tone sounds like it was emitted from the proper place on an actual grand piano, and the transducers simulate the expansion of the sound to fill the venue. The cases of the grand piano models are even used to simulate the radiation of grand piano sounds, creating a lush listening environment for the audience as well.

- GrandTouch™ / GrandTouch-S™ keyboards
- Faithful simulation of the sounds and resonance of two world-class concert grand pianos
- Advanced binaural sampling
- Equipped with fortepiano (period instrument) voices
- Grand Expression Modeling
- Grand Acoustic Imaging
- Equipped with instructive lesson songs, rhythms, Bluetooth® audio / MIDI, SmartPianist app compatibility, and other entertaining functions that only a digital piano can deliver

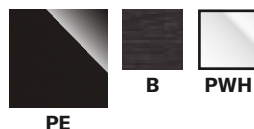


Period instrument voices open the door to the world of classical music

CLP-700 Series is Yamaha's first instrument range to be equipped with the voices of the fortepiano, the predecessor to the modern piano. The sounds emitted by a fortepiano are simpler than those of a modern piano, and decay much more rapidly. Hearing the sounds of the instruments played when the likes of Mozart, Beethoven and Chopin were composing their songs should illuminate the original intent behind the notes on the page. Here is a novel opportunity to communicate with historical composers by playing these periods of instruments.



CLP-785



GRANDTOUCH
KEYBOARD

GrandTouch™ keyboard with key counterweights

The long pivot length makes the entire length of each key easy to play, and enhances the touch for a broader range of tone and responsiveness. The counterweights enable greater expressiveness when playing in pianissimo or otherwise with a delicate touch, realistically simulating the feel of playing a grand piano.



Grand Acoustic Imaging / 3-way speakers / Upright piano design

The bass, mid, and treble speakers are optimally balanced and placed accordingly in the body to simulate the sound image of a grand piano. Additional transducers deliver an abundance of sound from the top of the cabinet, creating a natural sound field akin to the resonance from a grand piano soundboard.



4 fortepiano voices

The CLP-785 features four fortepiano voices. Exposure to the sounds beloved by Mozart, Chopin, and others in the 18th and early 19th centuries should create a deeper understanding of what these composers were thinking and feeling when they wrote their music, and cast modern piano playing in a new light.



SOUND

- CFX and Bösendorfer Imperial piano samples
- CFX and Bösendorfer Imperial Binaural sampling
- **4 forte piano Voices**
- Improved VRM (Virtual Resonance Modeling)
- Grand Expression Modeling
- Smooth Release
- Key-Off samples
- 256-note polyphony
- **53 Voices + 14 Drum / SFX Kits + 480 XG Voices + GM2 / GS (Song file playback)**

TOUCH, PEDAL

- GrandTouch™ keyboard with synthetic ebony and ivory keytops (wood is used for the white keys)
- Escapement
- **Counterweight**
- 88-key Linear Graded Hammers
- GP Response Damper Pedal

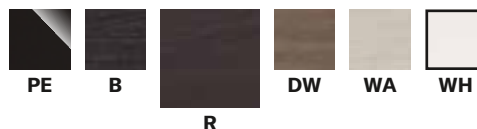
AND MORE

- 128 x 64 full dots LCD
- Touch Sensor Control Panel
- Dual / Split / Duo
- Digital effects Reverb / Chorus / Brilliance / Effect)
- **25 Voice Demo Songs + 50 Piano Songs* + 303 Lesson Songs**
- 20 rhythms
- 16-track recording
- USB Audio Recorder (Playback / Recording: WAV)
- USB TO HOST and USB TO DEVICE
- Dual headphone jacks
- **(50 W + 50 W + 50 W) x 2 amplifiers**
- **(16 cm + 8 cm + 2.5 cm [dome]) x 2 speaker system**
- **Spruce Cone speakers**
- Speaker box
- Transducers
- Intelligent Acoustic Control (IAC)
- Stereophonic Optimizer
- Music rest clips
- **Folding key cover**
- Built-in Audio Bluetooth® receiver / Bluetooth® MIDI

* The Clavinova comes with a book of music scores.

Highlighted bullets show expanded features from the next model below.

CLP-775



SOUND

- CFX and Bösendorfer Imperial piano samples
- CFX and Bösendorfer Imperial Binaural sampling
- 2 forte piano Voices
- Improved VRM (Virtual Resonance Modeling)
- Grand Expression Modeling
- Smooth Release
- Key-Off samples
- 256-note polyphony
- 38 Voices

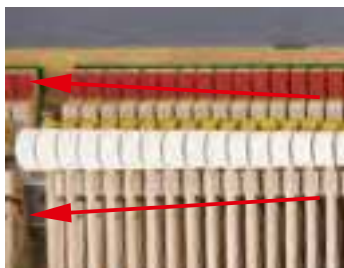
TOUCH, PEDAL

- **GrandTouch™ keyboard with synthetic ebony and ivory keytops (wood is used for the white keys)**
- Escapement
- **88-key Linear Graded Hammers**
- **GP Response Damper Pedal**



GrandTouch™ keyboard with 88-key Linear Graded Hammers / GP Response Damper Pedal

Just like a grand piano, each and every one of the 88 keys is uniquely calibrated to simulate a different weight and return. The GP Response Damper Pedal is designed to work and respond just like a grand piano damper pedal, allowing you to practice with authentic touch and feel whenever you play your Clavinova.



Grand Acoustic Imaging / 3-way speakers

The CLP-775 features a speaker box with individual speakers for the bass, mid, and treble ranges. The speakers are optimally balanced and placed, and additional transducers create a natural sound field akin to the resonance from a grand piano soundboard.



Touch sensor control panel

The touch panel only displays text when it is on — when the panel is off, it has the smooth finish of a key block.



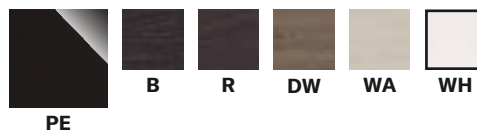
AND MORE

- 128 x 64 full dots LCD
- **Touch Sensor Control Panel**
- Dual / Split / Duo
- Digital effects (Reverb / Chorus / Brilliance / Effect)
- 21 Voice Demo Songs + 50 Piano Songs* + 303 Lesson Songs
- 20 rhythms
- 16-track recording
- USB Audio Recorder (Playback / Recording: WAV)
- USB TO HOST and USB TO DEVICE
- Dual headphone jacks
- **(50 W + 42 W + 50 W) x 2 amplifiers**
- **(16 cm + 8 cm + 5 cm) x 2 speaker system**
- **Speaker box**
- **Transducers**
- Intelligent Acoustic Control (IAC)
- Stereophonic Optimizer
- Music rest clips
- Sliding key cover
- Built-in Audio Bluetooth® receiver / Bluetooth® MIDI

* The Clavinova comes with a book of music scores.

Highlighted bullets show expanded features from the next model below.

CLP-745



SOUND

- CFX and Bösendorfer Imperial piano samples
- CFX and Bösendorfer Imperial Binaural sampling
- 2 forte piano Voices
- Improved VRM (Virtual Resonance Modeling)
- Grand Expression Modeling
- Smooth Release
- Key-Off samples
- 256-note polyphony
- 38 Voices

TOUCH, PEDAL

- **GrandTouch-S™ keyboard with synthetic ebony and ivory keytops (wood is used for the white keys)**
- Escapement

AND MORE

- 128 x 64 full dots LCD
- Dual / Split / Duo
- Digital effects (Reverb / Chorus / Brilliance / Effect)
- 21 Voice Demo Songs + 50 Piano Songs* + 303 Lesson Songs
- 20 rhythms
- 16-track recording
- USB Audio Recorder (Playback / Recording: WAV)
- USB TO HOST and USB TO DEVICE
- Dual headphone jacks
- **(50 W + 50 W) x 2 amplifiers**
- **(16 cm + 8 cm) x 2 speaker system**
- Intelligent Acoustic Control (IAC)
- Stereophonic Optimizer
- Music rest clips
- Sliding key cover
- **Built-in Audio Bluetooth® receiver / Bluetooth® MIDI**

GrandTouch-S™ keyboard with wooden keys

With grand piano-like consistency and a broad dynamic range of touch from pianissimo to fortissimo, GrandTouch-S™ keyboard offers precise tone control. Made of solid wood.



2-way speakers

Individual speakers for the mid and treble ranges produce a clear sound with depth.



Bluetooth® audio / Bluetooth® MIDI

Use music apps on your Bluetooth® device to play songs through the Clavinova's speakers, or even play along. You can even connect to the instrument wirelessly using Yamaha's Smart-Pianist app.



* The Clavinova comes with a book of music scores.

Highlighted bullets show expanded features from the next model below.

CLP-735



GRANDTOUCH S[™] KEYBOARD

New CFX and Bösendorfer sampling / Binaural sampling

The powerful, brilliant Yamaha CFX, and the Bösendorfer Imperial with its rich tones and natural-feeling resonance. The CLP-735 faithfully reproduces the dynamic range and diverse tone variation of these two great pianos. The full ambience of the sound while playing with headphones eliminates stress.



2 fortepiano voices, rhythms, USB Audio Recorder

Equipped with the voices of two pianos beloved by Mozart and Chopin. The rhythm function adds more fun and pizzazz to simple performances. Use a USB flash memory to play your best recorded performances on PCs and other devices.



Easy to control with full text LCD

An easy-to-read display and a simple interface for selecting functions such as rhythms and lesson songs. Dedicated panel buttons give quick access to the Yamaha CFX and Bösendorfer Imperial piano voices.



SOUND

- CFX and Bösendorfer Imperial piano samples
- CFX and Bösendorfer **Imperial Binaural** sampling
- **2 forte piano Voices**
- Improved VRM (Virtual Resonance Modeling)
- Grand Expression Modeling
- Smooth Release
- Key-Off samples
- 256-note polyphony
- **38 Voices**

TOUCH, PEDAL

- GrandTouch-S[™] keyboard with synthetic ebony and ivory keytops
- Escapement

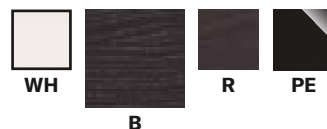
AND MORE

- **128 x 64 full dots LCD**
- Dual / **Split** / Duo
- Digital effects (Reverb / Chorus / Brilliance / Effect)
- **21 Voice Demo Songs + 50 Piano Songs* + 303 Lesson Songs**
- **20 rhythms**
- **16-track recording**
- **USB Audio Recorder (Playback / Recording: WAV)**
- USB TO HOST and **USB TO DEVICE**
- Dual headphone jacks
- **30 W x 2 amplifiers**
- **16 cm x 2 speaker system**
- Intelligent Acoustic Control (IAC)
- Stereophonic Optimizer
- Music rest clips
- Sliding key cover

* The Clavinova comes with a book of music scores.

Highlighted bullets show expanded features from the next model below.

CLP-725



GRANDTOUCH S[™] KEYBOARD

Grand Expression Modeling

CLP-725 reproduces the diverse tonal variations created by the behaviour of the hammers, dampers and strings of an acoustic grand piano. The simulation of the tone variation created by differences in the force and speed with which the keys are pressed and released enables a fuller experience of playing than ever before, helping pianists develop genuine expressive abilities.



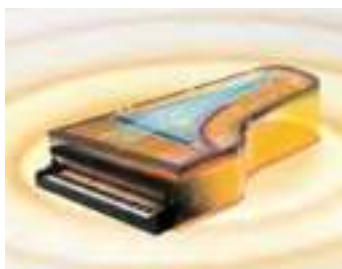
GrandTouch-S[™] keyboard with synthetic ebony and ivory keytops

With a grand piano-like consistency and broad dynamic range of touch from pianissimo to fortissimo, the GrandTouch-S[™] keyboard offers precise tone control. The synthetic ivory white keys and synthetic ebony black keys make playing comfortable for long periods.



Two incredible concert grand piano voices / Virtual Resonance Modeling

Equipped with Yamaha CFX and Bösendorfer Imperial voices. VRM intricately simulates the full sympathetic sounds created by the overlapping resonance of the strings and body of a grand piano. The exquisite piano sound makes every song sound great.



SOUND

- CFX and Bösendorfer Imperial piano samples
- CFX Grand Binaural sampling
- Improved VRM (Virtual Resonance Modeling)
- Grand Expression Modeling
- Smooth Release
- Key-Off samples
- 256-note polyphony
- 10 Voices

TOUCH, PEDAL

- GrandTouch-S[™] keyboard with synthetic ebony and ivory keytops
- Escapement

AND MORE

- Dual/Duo
- 4 Reverb
- 10 Voice Demo Songs + 50 Piano Songs*
- MIDI-Record (2-tracks)
- USB TO HOST
- Dual headphone jacks
- 20 W x 2 amplifiers
- 12 cm x 2 speaker system
- Intelligent Acoustic Control (IAC)
- Stereophonic Optimizer
- Music rest clips

* The Clavinova comes with a book of music scores.

CLP-795GP



GRANDTOUCH
KEYBOARD

GrandTouch™ keyboard with key counterweights

The long pivot length makes the entire length of each key easy to play, and enhances the touch for a broader range of tone and responsiveness. The counterweights enable greater expressiveness when playing in pianissimo or otherwise with a delicate touch, realistically simulating the feel of playing a grand piano.



Acoustic characteristics of the grand piano shape / Grand Acoustic Imaging

Individual speakers for the bass, mid, and treble ranges are placed asymmetrically to make the most of the grand piano-shaped case. Additional transducers make the sound emanate in the same way as a grand piano, producing wonderful performances to be enjoyed by the performer and audience alike.



Grand piano elegance

The gentle curves and elegant silhouette of the CLP-795GP distill the allure of the grand piano into a wholly modern form.



SOUND

- CFX and Bösendorfer Imperial piano samples
- CFX and Bösendorfer Imperial Binaural sampling
- **4 forte piano Voices**
- Improved VRM (Virtual Resonance Modeling)
- Grand Expression Modeling
- Smooth Release
- Key-Off samples
- 256-note polyphony
- **53 + 14 Drum / SFX Kits + 480 XG Voices + GM2 / GS (Song file playback)**

TOUCH, PEDAL

- **GrandTouch™ keyboard with synthetic ebony and ivory keytops (wood is used for the white keys)**
- Escapement
- **Counterweight**
- **88-key Linear Graded Hammers**
- **GP Response Damper Pedal**

AND MORE

- 128 x 64 full dots LCD
- **Touch Sensor Control Panel**
- Dual / Split / Duo
- Digital effects (Reverb / Chorus / Brilliance / Effect)
- **25 Voice Demo Songs + 50 Piano Songs* + 303 Lesson Songs**
- 20 rhythms
- 16-track recording
- USB Audio Recorder (Playback / Recording: WAV)
- USB TO HOST and USB TO DEVICE
- Dual headphone jacks
- **(50 W + 50 W + 50 W) x 2 amplifiers**
- **(16 cm + 8 cm + 2.5 cm [dome]) x 2 speaker system**
- **Spruce Cone speakers**
- **Speaker box**
- **Transducers**
- Intelligent Acoustic Control (IAC)
- Stereophonic Optimizer
- Music rest clips
- Sliding key cover
- Built-in Audio Bluetooth® receiver / Bluetooth® MIDI

* The Clavinova comes with a book of music scores.

Highlighted bullets show expanded features from the next model below.

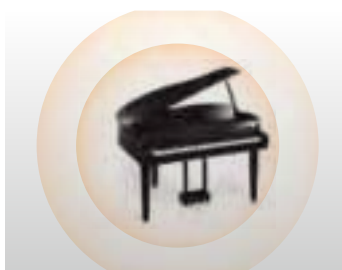
CLP-765GP



Mini Grand cabinet with custom-designed sound system

Grand piano style and design brings elegance to any room. Deep and expansive grand piano sound reflects powerfully off the piano lid.

GRANDTOUCH
KEYBOARD



GrandTouch-S™ keyboard with synthetic ebony and ivory keytops

With grand piano-like consistency and a broad dynamic range of touch from pianissimo to fortissimo, GrandTouch-S keyboard offers precise tone control. The synthetic ivory white keys and synthetic ebony black keys make it easy to play for long periods.



Bluetooth® audio / Bluetooth® MIDI

Use music apps on your Bluetooth device to play songs through the Clavinova's speakers, or even play along. You can even connect to the instrument wirelessly using Yamaha's Smart Pianist app.



SOUND

- CFX and Bösendorfer Imperial piano samples
- CFX and Bösendorfer Imperial Binaural sampling
- 2 forte piano Voices
- Improved VRM (Virtual Resonance Modeling)
- Grand Expression Modeling
- Smooth Release
- Key-Off samples
- 256-note polyphony
- 38 Voices

TOUCH, PEDAL

- GrandTouch-S™ keyboard with synthetic ebony and ivory keytops
- Escapement

AND MORE

- 128 x 64 full dots LCD
- Dual / Split / Duo
- Digital effects (Reverb / Chorus / Brilliance / Effect)
- 21 Voice Demo Songs + 50 Piano Songs* + 303 Lesson Songs
- 20 rhythms
- 16-track recording
- USB Audio Recorder (Playback / Recording: WAV)
- USB TO HOST and USB TO DEVICE
- Dual headphone jacks
- (50 + 42 W) x 2 amplifiers
- (16 cm + 5 cm) x 2 speaker system
- Intelligent Acoustic Control (IAC)
- Stereophonic Optimizer
- Music rest clips
- Sliding key cover
- Built-in Audio Bluetooth® receiver / Bluetooth® MIDI

* The Clavinova comes with a book of music scores.

CLP

OVERVIEW

	CLP-785	CLP-775	CLP-745	CLP-735	CLP-725	CLP-795GP	CLP-765GP
Sound	CFX and Bösendorfer Imperial piano samples					CFX and Bösendorfer Imperial piano samples	
	CFX and Bösendorfer Imperial Binaural sampling				CFX Grand Binaural sampling	CFX and Bösendorfer Imperial Binaural sampling	
	4 forte piano Voices	2 forte piano Voices	2 forte piano Voices	2 forte piano Voices	–	4 forte piano Voices	2 forte piano Voices
	Improved VRM (Virtual Resonance Modeling)	Improved VRM (Virtual Resonance Modeling)	Improved VRM (Virtual Resonance Modeling)	Improved VRM (Virtual Resonance Modeling)	Improved VRM (Virtual Resonance Modeling)	Improved VRM (Virtual Resonance Modeling)	Improved VRM (Virtual Resonance Modeling)
	Grand Expression Modeling					Grand Expression Modeling	
	Smooth Release					Smooth Release	
	Key-Off samples					Key-Off samples	
	256-note polyphony					256-note polyphony	
	53 Voices + 14 Drum / SFX Kits + 480 XG Voices + GM2 / GS (Song file playback)	38 Voices	38 Voices	38 Voices	10 Voices	53 Voices + 14 Drum / SFX Kits + 480 XG Voices + GM2 / GS (Song file playback)	38 Voices
	Touch & Pedals	GrandTouch™ keyboard with synthetic ebony and ivory keytops (wood is used for the white keys)	GrandTouch™ keyboard with synthetic ebony and ivory keytops (wood is used for the white keys)	GrandTouch-S™ keyboard with synthetic ebony and ivory keytops (wood is used for the white keys)	GrandTouch-S™ keyboard with synthetic ebony and ivory keytops	GrandTouch-S™ keyboard: synthetic ebony and ivory keytops	GrandTouch™ keyboard with synthetic ebony and ivory keytops (wood is used for the white keys)
Escapement					Escapement		
Counterweight		–	–	–	–	Counterweight	–
88-key Linear Graded Hammers		88-key Linear Graded Hammers	–	–	–	88-key Linear Graded Hammers	–
GP Response Damper Pedal		GP Response Damper Pedal	–	–	–	GP Response Damper Pedal	–
And more	128 x 64 full dots LCD	128 x 64 full dots LCD	128 x 64 full dots LCD	128 x 64 full dots LCD	–	128 x 64 full dots LCD	128 x 64 full dots LCD
	Touch Sensor Control Panel	Touch Sensor Control Panel	Buttons	Buttons	–	Touch Sensor Control Panel	Buttons
	Dual / Split / Duo				Dual / – / Duo	Dual / Split / Duo	
	Digital effects (Reverb / Chorus / Brilliance / Effect)				Reverb: 4	Digital effects (Reverb / Chorus / Brilliance / Effect)	
	25 Voice Demo Songs + 50 Piano Songs* + 303 Lesson Songs	21 Voice Demo Songs + 50 Piano Songs* + 303 Lesson Songs	21 Voice Demo Songs + 50 Piano Songs* + 303 Lesson Songs	21 Voice Demo Songs + 50 Piano Songs* + 303 Lesson Songs	10 Voice Demo Songs + 50 Classics	25 Voice Demo Songs + 50 Piano Songs* + 303 Lesson Songs	21 Voice Demo Songs + 50 Piano Songs* + 303 Lesson Songs
	20 rhythms	20 rhythms	20 rhythms	20 rhythms	–	20 rhythms	20 rhythms
	16-track recording	16-track recording	16-track recording	16-track recording	2-track recording	16-track recording	16-track recording
	USB Audio Recorder (Playback / Recording: WAV)	USB Audio Recorder (Playback / Recording: WAV)	USB Audio Recorder (Playback / Recording: WAV)	USB Audio Recorder (Playback / Recording: WAV)	–	USB Audio Recorder (Playback / Recording: WAV)	USB Audio Recorder (Playback / Recording: WAV)
	USB TO HOST				–	USB TO HOST	
	USB TO DEVICE					USB TO DEVICE	
	Dual headphone jacks					Dual headphone jacks	
	(50 W + 50 W + 50 W) x 2 amplifiers	(50 W + 42 W + 50 W) x 2 amplifiers	(50 W + 50 W) x 2 amplifiers	30 W x 2 amplifiers	20 W x 2	(50 W + 50 W + 50 W) x 2 amplifiers	(50 + 42 W) x 2 amplifiers
	(16 cm + 8 cm + 2.5 cm [dome]) x 2 speaker system	(16 cm + 8 cm + 5 cm) x 2 speaker system	(16 cm + 8 cm) x 2 speaker system	16 cm x 2 speaker system	12 cm x 2	(16 cm + 8 cm + 2.5 cm [dome]) x 2 speaker system	(16 cm + 5 cm) x 2 speaker system
	Spruce Cone speakers	–	–	–	–	Spruce Cone speakers	–
	Speaker box	Speaker box	–	–	–	Speaker box	–
	Transducers	Transducers	–	–	–	Transducers	–
	Intelligent Acoustic Control (IAC)					Intelligent Acoustic Control (IAC)	
	Stereophonic Optimizer					Stereophonic Optimizer	
	Music rest clips					Music rest clips	
	Folding key cover	Sliding key cover	Sliding key cover	Sliding key cover	Sliding key cover	Sliding key cover	Sliding key cover
	Built-in Audio Bluetooth® receiver / Bluetooth® MIDI	Built-in Audio Bluetooth® receiver / Bluetooth® MIDI	Built-in Audio Bluetooth® receiver / Bluetooth® MIDI	–	–	Built-in Audio Bluetooth® receiver / Bluetooth® MIDI	Built-in Audio Bluetooth® receiver / Bluetooth® MIDI

* The Clavinova comes with a book of music scores.
Highlighted bullets show expanded features from the next model below.

C S P

S E R I E S

INTRODUCING AN INNOVATIVE NEW WAY TO ENJOY THE PIANO

Intuitive simplicity

Enjoy simple, intuitive operation from smart devices with the dedicated CSP SmartPianist app. SmartPianist can be downloaded from the App Store or Google Play Store.

No more frustrations!

The CSP will dispel any preconceptions you might have about playing the piano being a difficult, frustrating experience. The dedicated CSP app analyses the music you want to play and then creates a music score for you. All you have to do is follow the Stream Lights!

STEP 1 — Song Select

Pick a song, any song ... Choose any song you like from your audio/song library.

STEP 2 — Audio to Score

Load the song into the SmartPianist app, and the “Audio to Score” feature will analyse the chords and create a score instantly.

STEP 3 — Stream Lights

Now you’re ready to go! Let the Stream Lights guide your fingers as you play along with the song.

For the more committed performer ...

When you’re ready to take on the challenge of solo performance, the CSP offers built-in songs for immediate enjoyment. And even if you’re not confident in your playing abilities, you can trust the Stream Lights to show you the way.



- Operate with your smart device
- Start playing a song you like. Stream Lights will show you which keys to press
- Enjoy performing with accompaniments, or even sing along!





Solo, band, orchestra, and more!

The CSP lineup offer unrivalled capacity for musical expression, with a huge variety of instrument voices that belie their simple, elegant exteriors. You can also enjoy ensemble sessions with rock or jazz bands, and even bossa nova orchestras, simply by assigning Styles.

Want to sing as well? The CSP comes equipped with a mic input, and will even harmonize with you as you sing!

Flexible connectivity

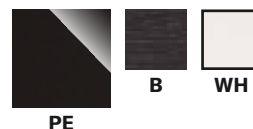
CSP Series Clavinova is equipped with a terminal for direct connection* to PCs and iOS or Android devices.

They also ship with a UD-WL01 Wi-Fi USB LAN adaptor for wireless connection to smart devices.

* For more details about connection please see p 44.

BEBOP
MUSICAL
COUNTRY ROCK
COUNTRY BALLAD
JAZZ SWING
MOVIE SWING
NEW COUNTRY
CLUB BLUES STANDARD 8 BEAT
BROADWAY DANCE WEST COAST POP
CHOIR SOUND BALLAD BRAZILLIAN BOSSA
FUNKY HOUSE DETROIT POP
INSTRUMENTAL JAZZ LIVE SOUL BAND
ELECTRONICA

CSP-170



*Natural
Wood X*

NWX keyboard with wooden keys

White keys made of specially selected natural wood provides a playing feel like that of a grand piano.



2-way speaker system and powerful amplifiers

The CSP-170 features two 45W + 45W amplifiers, along with two-way speakers dedicated to mid- and high-frequency reproduction, in a combination that delivers powerful sound with astonishing clarity.



Speaker box

The speaker box provides natural reverberation and resonance.



SOUND

- CFX and Bösendorfer Imperial piano samples
- CFX Binaural sampling
- VRM (Virtual Resonance Modeling)
- Smooth Release; Key-Off samples
- 256-note polyphony
- 692 Voices + 29 Drum / SFX
- 113 Super Articulation! Voices

TOUCH, PEDAL

- **NWX (Natural Wood X) keyboard with synthetic ebony and ivory keytops (wood is used for the white keys)**
- Escapement

AND MORE

- Stream Lights
- 470 Styles
- 403 internal songs
- 58 Reverbs
- Karaoke features / Vocal Harmony 2
- USB TO HOST; USB TO DEVICE
- iPad connection
- Dual headphone jacks / Mic Input
- **(45 W + 45 W) x 2 amplifiers**
- **(16 cm + 8 cm) x 2 speaker system**
- **Speaker box**
- Acoustic Optimizer
- Intelligent Acoustic Control (IAC)
- Stereophonic Optimizer
- Music rest clips
- Connect an iPhone, iPad, iPod Touch* or Android* wirelessly

* iPhone, iPad, iPod touch, Android device is not included.

Highlighted bullets show expanded features from the next model below (CSP-150).

CSP-150



B



GH3X

Smart device and SmartPianist

SmartPianist is an intuitive app that allows operation of the CSP-150 from smart devices. You can also use it to analyse your audio data and create musical accompaniment on the spot!



Stream Lights

Even beginning players can instantly experience the fun of performing on the piano, just by playing back a song while pressing the keys indicated by the Stream Lights.



A diverse library of sound

From the superb sound of keyboard instruments such as the CFX Yamaha concert grand and the Bösendorfer Imperial, to strings, percussion, and even choirs and other effect sounds, the CSP features a huge variety of voices.



SOUND

- CFX and Bösendorfer Imperial piano samples
- CFX Binaural sampling
- VRM (Virtual Resonance Modeling)
- Smooth Release; Key-Off samples
- 256-note polyphony
- 692 Voices + 29 Drum / SFX
- 113 Super Articulation! Voices

TOUCH, PEDAL

- GH3X (Graded Hammer 3X) keyboard with synthetic ebony and ivory keytops
- Escapement

AND MORE

- Stream Lights
- 470 Styles
- 403 internal songs
- 58 Reverbs
- Karaoke features / Vocal Harmony 2
- USB TO HOST; USB TO DEVICE
- iPad connection
- Dual headphone jacks / Mic Input
- 30 W x 2 amplifiers
- 16 cm x 2 speaker system
- Acoustic Optimizer
- Intelligent Acoustic Control (IAC)
- Stereophonic Optimizer
- Music rest clips
- Connect an iPhone, iPad, iPod Touch* or Android* wirelessly

* iPhone, iPad, iPod touch, Android device is not included.

C S P

O V E R V I E W

	CSP-170	CSP-150
Sound	CFX and Bösendorfer Imperial piano samples	
	CFX Binaural sampling	
	VRM (Virtual Resonance Modeling)	
	Smooth Release; Key-Off samples	
	256-note polyphony	
	692 Voices + 29 Drum / SFX	
	113 Super Articulation! Voices	
Touch	NWX (Natural Wood X) keyboard with synthetic ebony and ivory keytops (wood is used for the white keys)	GH3X (Graded Hammer 3X) keyboard with synthetic ebony and ivory keytops
	Escapement	
Functions	Stream Lights	
	470 Styles	
	403 internal songs	
	58 Reverbs	
	Karaoke features / Vocal Harmony 2	
	USB TO HOST; USB TO DEVICE	
	Dual headphone jacks / Mic Input	
	(45 W + 45 W) x 2 amplifiers	30 W x 2 amplifiers
	(16 cm + 8 cm) x 2 speaker system, Speaker box	16 cm x 2 speaker system
	Acoustic Optimizer	
	Intelligent Acoustic Control (IAC)	
	Stereophonic Optimizer	
	Music rest clips	
	Connect an iPhone, iPad, iPod Touch or Android wirelessly*	

Highlighted bullets show expanded features from the next model below.

* iPhone, iPad, iPod touch, Android device is not included



C V P

S E R I E S

IRRESISTIBLE FOR MUSIC LOVERS

TRUE-TO-LIFE INSTRUMENT VOICES Be inspired by a variety of instruments, each reproduced in perfect detail

The CVP-800 series benefits from startling improvements to every area of its sound. The top model CVP-809 / 809GP in particular features all-new samples for instruments such as electric piano, strings, guitar, bass, and drums, delivering sound quality that has to be heard to be believed.

EXPLORE A WIDE VARIETY OF BACKING STYLES Live up your playing with ensemble performances

Featuring a wide array of backing Styles, the CVP Series allows you to enjoy great-sounding performances with polished introductions and endings, delivering authentic accompaniments that will enhance your playing across a diverse range of musical genres. In the CVP-800 Series, these accompaniments come with dramatically improved sounds, enriching your performances.

Dive into the band experience

The CVP-800 Series boasts astonishing spatial acoustics and ensemble functionality so realistic that you can almost feel the presence of the other performers around you.

The sound you've always dreamed of awaits you

Enter the Piano Room, where you can customize everything — from the acoustics of the venue to the size and character of the piano, and the musicians with whom you're performing. The Clavinova offers a wealth of options to tailor the sound as you like, and even make musical discoveries you never even considered. Let your imagination run wild with Clavinova!

SING ALONG WITH CLAVINOVA

Connect a microphone to your Clavinova and enjoy fun and inspiring Karaoke features. The CVP Series will add natural harmonies to your voice as you sing, and can even mute the vocals of songs from your audio music library. You can view song lyrics* on the LCD screen and change the tempo and pitch of the songs themselves.

* Lyrics display is only available for MIDI songs when they contain lyric data.



AN INTUITIVE INTERFACE FOR MUSIC ENJOYMENT Guide lamps and touch panel linked with the on-screen score

Purchase MIDI data online for a more intuitive playing experience and practice songs by following the Guide Lamps, which indicate the keys to play while the bouncing ball on the screen follows the score.

Play, record, and share!

Offering the ability to arrange your accompaniment Styles, the CVP is a great tool for creating and arranging music in a wide variety of genres, allowing you to enjoy composing music in a casual, fun manner rather like sketching a picture. Combine this with the built-in USB Audio recording functionality to record your original compositions and share them with your friends!





- A variety of instrument voices
- Many different genres of auto accompaniments (Styles) to play along with
- Guide Lamps to teach you how to play
- Mic features to enjoy singing
- USB audio recorder to record your performance
- Intuitive touch screen panel
- Exclusive or general apps for added enjoyment

CVP-809GP



SOUND

- Yamaha CFX and Bösendorfer Imperial piano sample
- Binaural sampling (CFX Grand Voice only)
- VRM; Key-Off Samples; Smooth Release
- 256-note polyphony
- 1,605 Voices
+ 58 Drum / SFX Kits
+ 480 XG Voices
- 17 VRM Voices; 36 Super Articulation2 Voices; 301 Super Articulation Voices
- Main, Split and Layer

TOUCH, PEDAL

- GrandTouch™ keyboard: wooden keys (white only), synthetic ebony and ivory keytops, Escapement
- 88-key Linear Graded Hammers; Counterweight
- GP Response Damper Pedal

AND MORE

- 9.0 inch (800 x 480 dots) TFT colour touch LCD
- Piano Room with Session Mode
- 675 Styles
- Revo! Drums
- Chord Looper
- 50 Popular Songs
+ 50 Classics Songs*
+ 303 Lesson Songs
- Guide Lamps; Scores and Lyrics display
- 16-track recording
- USB Audio Recorder (MP3, WAV)
- USB TO HOST and 2 x USB TO DEVICE
- Mic (Input Volume; Mic / Line In); Vocal Harmony 2
- MIDI (IN / OUT / THRU)
- (40 W + 30 W + 20 W) × 2 + 80 W amplifiers
- Speaker-System: (16 cm + 5 cm + 2.5 cm [dome]) × 2 + 20 cm; Spruce Cone Speaker and Twisted Flare Ports
- Built-in Bluetooth® Audio receiver

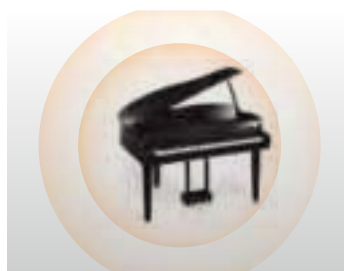
Grand piano elegance

The gentle curves and elegant silhouette of the CVP-809GP distil the allure of the grand piano into a wholly modern form.



Custom-designed sound system

The specially-designed sound system of the CVP-809GP utilizes the entire body of the instrument to provide the deep, resonant sound and broad dynamic range of a grand piano.



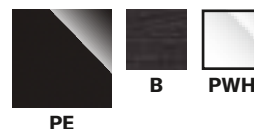
Two incredible grand piano voices

Voices from the CFX, Yamaha's finest concert grand piano, and Bösendorfer's legendary Imperial, with each key sampled individually. Thanks to binaural sampling, CVP Series Clavinova offers a fully immersive concert grand experience, even when using headphones.



* The Clavinova comes with a book of music scores.

CVP-809



GRANDTOUCH
KEYBOARD

Experience live performance

Distorted guitars, rotary speaker organs, ethereal strings... this CVP delivers on all fronts, with unprecedented levels of realism. It reproduces the subtle variations that occur when even the most skilled drummer plays, so that you feel just like you're performing with a human drummer in a live band.



Innovations for a more resonant sound

With speaker cones constructed of the same spruce as used in piano soundboards for a crisp, detailed sound, the CVP-809 also features sub-woofers with a twisted flare port construction that delivers a superbly resonant bass.



The finest piano functions

Counterweights offer a superb touch similar to that of a grand piano, with the delicacy required when using techniques such as pianissimo. The GP Response Damper Pedal has a grand piano-style resistance curve that delivers authentic grand piano pedal feel.



SOUND

- Yamaha CFX and Bösendorfer Imperial piano sample
- Binaural sampling (CFX Grand Voice only)
- VRM; Key-Off Samples; Smooth Release
- 256-note polyphony
- **1,605 Voices + 58 Drum / SFX Kits + 480 XG Voices**
- **17 VRM Voices; 36 Super Articulation2 Voices; 301 Super Articulation Voices**
- Main, Split and Layer

TOUCH, PEDAL

- GrandTouch™ keyboard: wooden keys (white only), synthetic ebony and ivory keytops, Escapement
- 88-key Linear Graded Hammers; **Counterweight**
- **GP Response Damper Pedal**

AND MORE

- **9.0 inch (800 x 480 dots) TFT colour touch LCD**
- Piano Room with Session Mode
- **675 Styles**
- **Revo! Drums**
- Chord Looper
- 50 Popular Songs + 50 Classics Songs* + 303 Lesson Songs
- Guide Lamps; Scores and Lyrics display
- 16-track recording
- USB Audio Recorder (MP3, WAV)
- USB TO HOST and **2 x USB TO DEVICE**
- Mic (Input Volume; Mic / Line In); Vocal Harmony 2
- MIDI (IN / OUT / THRU)
- **(40 W + 30 W + 20 W) x 2 + 80 W amplifiers**
- **Speaker-System: (16 cm + 5 cm + 2.5 cm [dome]) x 2 + 20 cm; Spruce Cone Speaker and Twisted Flare Ports**
- Built-in Bluetooth® Audio receiver

* The Clavinova comes with a book of music scores.

Highlighted bullets show expanded features from the next model below (CSP-150).

CVP-805



SOUND

- Yamaha CFX and Bösendorfer Imperial piano sample
- Binaural sampling (CFX Grand Voice only)
- VRM; Key-Off Samples; Smooth Release
- 256-note polyphony
- 1,315 Voices + 49 Drum / SFX Kits + 480 XG Voices
- 14 VRM Voices; 227 Super Articulation Voices
- Main, Split and Layer

TOUCH, PEDAL

- GrandTouch™ keyboard: wooden keys (white only), synthetic ebony and ivory keytops, Escapement
- 88-key Linear Graded Hammers

AND MORE

- 7.0 inch (800x 480 dots) TFT colour touch LCD
- Piano Room with Session Mode
- 525 Styles
- Chord Looper
- 50 Popular Song + 50 Classics Songs* + 303 Lesson Songs
- Guide Lamps; Scores and Lyrics display
- 16-track recording
- USB Audio Recorder (MP3, WAV)
- USB TO HOST and USB TO DEVICE x 2
- Mic (Input Volume; Mic / Line In); Vocal Harmony 2
- MIDI (IN / OUT / THRU)
- (45W + 20W) x 2 amplifiers
- Speaker-System: (16 cm + 2.5 cm [dome]) x 2
- Built-in Audio Bluetooth® Audio receiver

Revitalized core voices

In addition to significantly improved piano tones and upgraded instrument voices, the CVP-805 features better instrument acoustics that add a three-dimensional aspect to the sound heard by the player, enhancing the overall performance experience.



GrandTouch™ keyboard with 88-key Linear Graded Hammers

With no two keys alike, GrandTouch™ keyboard lets pianists play subtle to strong tones more dynamically than ever before, and faithfully reproduce the differences in the weight and return of each key.



Built-in Bluetooth® audio

Play along with your favourite music using the Clavinova's built-in Bluetooth® interface, or just enjoy listening through the CVP's high-quality speakers.



* The Clavinova comes with a book of music scores.

CVP-701



GH3X

A diverse library of sound

From the superb sound of keyboard instruments such as the CFX Yamaha concert grand and the Bösendorfer Imperial, to strings, percussion, and even choirs and other effect sounds, the CVP features a huge variety of voices.



Styles (Automatic accompaniment)

Enjoy ensemble performances together with a range of different instruments, so that you can play with your backing band, even when you're on your own.



Comprehensive suite of karaoke functions

Call up song lyrics on the display and connect a microphone to enjoy performing karaoke in the comfort of your own home.



SOUND

- CFX and Bösendorfer Imperial piano samples
- VRM; Key-Off Samples; Smooth Release
- 256-note polyphony
- 777 Voices + 480 XG + 29 Drum / SFX
- 10 VRM Voices; 49 Super Articulation Voices

TOUCH, PEDAL

- GH3X (Graded Hammer 3X) keyboard with synthetic ivory keytops
- Escapement

AND MORE

- 4.3 inch (480 x 272 dots) TFT colour LCD
- Piano Room with Session Mode
- 310 Styles
- 65 Preset Songs*
- Guide Lamps; Scores and Lyrics display
- 16-track recording
- USB Audio Recorder (WAV)
- USB TO HOST and USB TO DEVICE
- Mic (Input Volume; Mic/Line In)
- MIDI (IN/OUT/THRU)
- 25 W x 2 amplifiers
- Speaker-System: 16 cm x 2
- Acoustic Optimizer
- Intelligent Acoustic Control (IAC)
- Stereophonic Optimizer
- Connect an iPhone, iPad or iPod touch*

* The CVP-701 does not offer wireless connectivity.

For wired connection, refer to "iPhone / iPad Connection Manual" (<http://download.yamaha.com>)



CVP

OVERVIEW

	CVP-809GP	CVP-809	CVP-805	CVP-701
Sound	Yamaha CFX and Bösendorfer Imperial piano sample	Yamaha CFX and Bösendorfer Imperial piano sample	Yamaha CFX and Bösendorfer Imperial piano sample	Yamaha CFX and Bösendorfer Imperial piano samples
	Binaural sampling (CFX Grand Voice only)	Binaural sampling (CFX Grand Voice only)	Binaural sampling (CFX Grand Voice only)	-
	VRM; Key-Off Samples; Smooth Release	VRM; Key-Off Samples; Smooth Release	VRM; Key-Off Samples; Smooth Release	VRM; Key-Off Samples; Smooth Release
	256-note polyphony	256-note polyphony	256-note polyphony	256-note polyphony
	1,605 Voices + 58 Drum / SFX Kits + 480 XG Voices	1,605 Voices + 58 Drum / SFX Kits + 480 XG Voices	1,315 Voices + 49 Drum / SFX Kits + 480 XG Voices	777 Voices + 480 XG + 29 Drum / SFX
Touch & Pedals	17 VRM Voices; 36 Super Articulation2 Voices; 301 Super Articulation Voices	17 VRM Voices; 36 Super Articulation2 Voices; 301 Super Articulation Voices	14 VRM Voices; 227 Super Articulation Voices	10 VRM Voices; 49 Super Articulation Voices
	Dual (Layer) / Split	Dual (Layer) / Split	Dual (Layer) / Split	Dual (Layer) / Split
	GrandTouch™ keyboard: wooden keys (white only), synthetic ebony and ivory key tops, Escapement	GrandTouch™ keyboard: wooden keys (white only), synthetic ebony and ivory key tops, Escapement	GrandTouch™ keyboard: wooden keys (white only), synthetic ebony and ivory key tops, Escapement	GH3X (Graded Hammer 3X) keyboard with synthetic ivory keytops, Escapement
	88-key Linear Graded Hammers; Counterweight	88-key Linear Graded Hammers; Counterweight	88-key Linear Graded Hammers	-
	GP Response Damper Pedal	GP Response Damper Pedal	-	-
And more	9.0 inch (800 x 480 dots) TFT colour touch LCD	9.0 inch (800 x 480 dots) TFT colour touch LCD	7.0 inch (800 x 480 dots) TFT colour touch LCD	Colour 4.3 inch display (480 x 272 dots)
	Piano Room with Session Mode	Piano Room with Session Mode	Piano Room with Session Mode	Piano Room with Session Mode
	675 Styles	675 Styles	525 Styles	310 Styles
	Revo! Drums	Revo! Drums	-	-
	Chord Looper	Chord Looper	Chord Looper	-
	50 Popular Songs + 50 Classics Songs + 303 Lesson Songs	50 Popular Songs + 50 Classics Songs + 303 Lesson Songs	50 Popular Song + 50 Classics Songs + 303 Lesson Songs	65 Preset Songs
	Guide Lamps; Scores and Lyrics display	Guide Lamps; Scores and Lyrics display	Guide Lamps; Scores and Lyrics display	Guide Lamps; Scores and Lyrics display
	16-track recording	16-track recording	16-track recording	16-track recording
	USB Audio Recorder (MP3, WAV)	USB Audio Recorder (MP3, WAV)	USB Audio Recorder (MP3, WAV)	USB Audio Recorder (WAV)
	USB TO HOST and 2x USB TO DEVICE	USB TO HOST and 2x USB TO DEVICE	USB TO HOST and 2x USB TO DEVICE	USB TO HOST and USB TO DEVICE
	Mic (Input Volume; Mic / Line In); Vocal Harmony 2	Mic (Input Volume; Mic / Line In); Vocal Harmony 2	Mic (Input Volume; Mic / Line In); Vocal Harmony 2	Mic (Input Volume; Mic / Line In)
	MIDI (IN / OUT / THRU)	MIDI (IN / OUT / THRU)	MIDI (IN / OUT / THRU)	MIDI (IN / OUT / THRU)
	(40W + 30W + 20W) × 2 + 80W amplifiers	(40W + 30W + 20W) × 2 + 80W amplifiers	(45W + 20W) × 2 amplifiers	25W x 2 amplifiers
	Speaker-System: (16 cm + 5 cm + 2.5 cm [dome]) × 2 + 20 cm; Spruce Cone Speaker and Twisted Flare Ports	Speaker-System: (16 cm + 5 cm + 2.5 cm [dome]) × 2 + 20 cm; Spruce Cone Speaker and Twisted Flare Ports	Speaker-System: (16 cm + 2.5 cm [dome]) × 2	16 cm x 2 speaker system Acoustic Optimize
	Built-in Bluetooth® Audio receiver	Built-in Bluetooth® Audio receiver	Built-in Bluetooth® Audio receiver	-

ENJOY A DIALOGUE WITH A GREAT PIANO

The player plays, the piano responds, and the player continues to play. The player conveys the feelings they want to express and the piano responds, in an ongoing exchange that forges a dialogue between the two. For this to be a truly rich exchange, both the player and the piano must possess excellent expressive capabilities; the piano must be easy to play and highly responsive, and it must produce beautiful sounds. A great piano satisfies these conditions, and interacting with a great piano inspires the player to explore the bounds of their expressive capabilities. Yamaha crafts pianos that will draw you into a musical dialogue that is sure to make playing more enjoyable and inspiring than ever before.





PLAYABILITY

The dialogue with a piano begins when the player touches the keys. The player wants to know that the keys are easy to play, that they are capable of subtle, nuanced musical expression, that they can handle the player's most powerful intensity, and that they offer total control. Yamaha aims to make pianos that elicit smiles and flurries of the heart the moment the player puts their hands-on the keys.

SENSITIVITY

In actuality, pianos must be just as expressive as players are required to be. Yamaha views the richness of tonal variation of a piano as the indicator of the instrument's expressive capabilities. A great piano one with tonal variation that reflects the player's individuality. The output of a highly sensitive piano matches the subtle differences in the input, encouraging the player to hone their expressive capabilities.

SOUND QUALITY

A grand piano is a musical instrument composed of 8,000 parts. The complex interaction of each mechanism in the instrument produces various tonal elements that interact with each other to form a richly varied palate of beautiful sound, from clear, resplendent tones to warm resonance. The Clavinova colours any space with beautiful tone, offering the player an experience of being enveloped in sound.

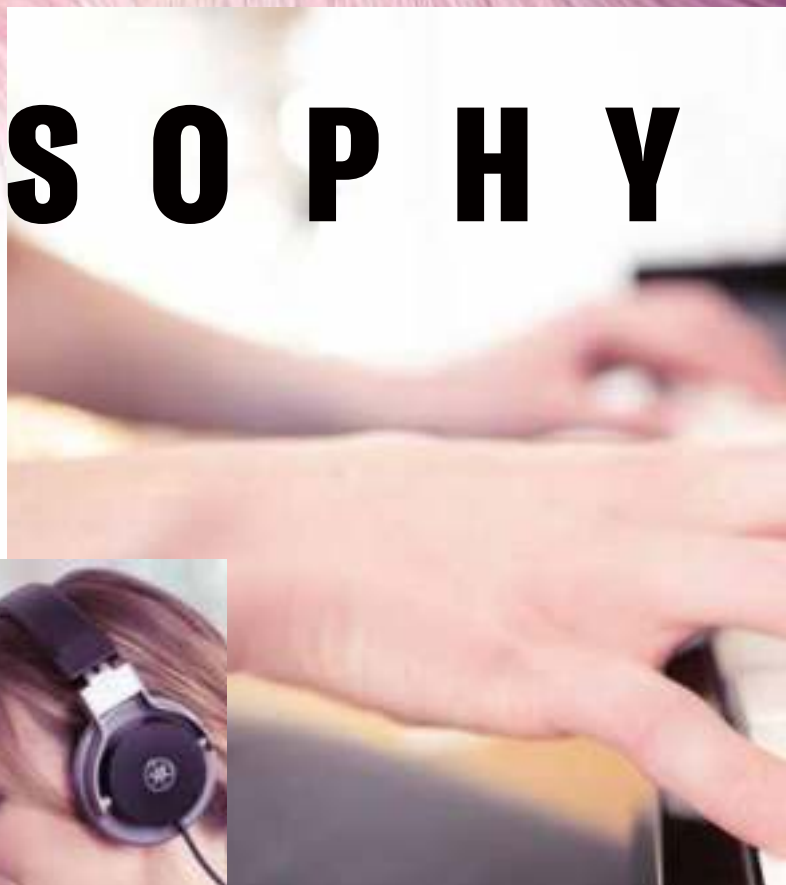
DESIGN PHILOSOPHY

The very best keys and pedals

Since the inception of Clavinova in 1983, Yamaha has developed the digital pianos in this line-up with the aim of achieving the same feel as a grand piano. The keys have an extraordinary impact on the feel of a piano, and Yamaha has focused on delivering grand piano feel in the designs of the keys used in Clavinova pianos.

However, that feeling cannot be reproduced in digital pianos simply by imitating the structure and shape of the grand piano action, for a variety of reasons. Chief among these is the difference between the way digital pianos emit sounds and that of grand pianos, which utilize a mechanism in which hammers strike strings. Additionally, grand piano keyboards comprise over 6,000 components working in concert to produce a distinct feel that suffers if even one component is missing or not maintained on a regular basis.

Yamaha always prioritizes playability and is constantly refining the digital piano keyboard, innovating and optimizing the sound-producing structure and housing used in digital pianos as it seeks to satisfy the need for a compact, durable form. Pedals are another important determinant of playability, and Yamaha designs damper pedals that are responsive, yet also simulate the unmistakable gravity of grand piano pedals to achieve more nuanced pedal operation.



Design philosophy

Clavinova pianos boast excellent playability and versatile functions, along with a refined, authentic design that blends a compact form with modern aesthetics in a manner befitting the instrument that sets the contemporary standard for pianos. At the heart of the Clavinova design concept is the way the player feels when they take their seat in front of a Clavinova piano.

Unnecessary elements are removed from the player's field of vision to create a convincingly natural space that feels just like sitting at an acoustic piano. This represents Yamaha's consideration to players who practice on Clavinova and perform on grand pianos — they are able to take the stage free of tension or worry because everything feels normal, as it should.

A Clavinova piano is a part of the player's everyday life — contemporary accents and colour variation are available to mesh with any interior design or lifestyle.



Lifelike concert grand piano sound

The vitality of the grand piano makes it feel as though it is alive, and Yamaha is committed to equipping Clavinova with the same ability to produce rich, natural sound.

This is achieved through the real-time calculation of the sympathetic sounds produced by the reverberations of the entire instrument from simulations of the distinct characteristics of the original sound sources — the Yamaha CFX and the Bösendorfer Imperial.

The next challenge is how to deliver the sounds of these renowned concert grand pianos to the player's ears through speakers and headphones with the same full ambience as the real thing. Finally, the essence of the grand piano is captured as a result of exhaustive experimentation, research, and development to properly time the attack after each key is played and match the emitted tones.

The ability to intricately adjust all aspects of the sound is made possible by Yamaha technology forged from expert knowledge of sublime pianos.

Limitless expression

What is a true grand piano expression? Yamaha continues to search for even better answers to that question. Grand pianos give players the ability to alter the sound with the subtlest differences in technique.

Thus, pianists vary the force and speed with which they play to create a wide range of different sounds in order to imbue their performances with texture. However, conventional digital pianos have their limits, and pianists feel that the output is flat compared to that of the grand piano.

The Clavinova line-up harnesses the very latest technology to faithfully simulate the wide array of expression available on grand pianos. This helps pianists develop the ability to hear and react to the way they play, an important skill in the study of piano. Clavinova pianos respond to the slightest variations of touch, giving players a wide range of expression and allowing them to sharpen their ability.

Acoustic design ideology

Acoustic design is a key element of sound creation. This is because, unlike acoustic pianos, digital pianos emit sounds from speakers. Even with a tone generator of the highest calibre, advanced acoustic design technology is an essential element in allowing an instrument to sound like a grand piano.

Key to the Clavinova design is a focus on enveloping the player with sound and reverberation to recreate the pleasing feeling of playing a grand piano. Only Yamaha possesses the acoustic piano and professional audio design capabilities needed to create speakers that emit the highest quality sound.

Yamaha's truly unique synergy of experts with innovative sound technology and know-how enables Clavinova pianos to recreate the vivid sound image and sound field of grand pianos.



TECHNOLOGY

PLAYABILITY — KEYS AND PEDALS

Through their centuries-long evolution, grand pianos have acquired their defining structural attributes as well as clever mechanisms for enhancing playability. Clavinova pianos replicate the true grand piano feel thanks to Yamaha's detailed study of the underlying mechanics of the instrument and the sensations experienced by piano players.

Examples of Yamaha's ingenuity abound. The weight and return of each and every key is calibrated to replicate the sensation of playing that same key on a grand piano. The repetition mechanism relies on three proprietary sensors that detect the slightest nuances of key movement to faithfully render the articulation of trills and other repeated notes.

Many other mechanisms bring the playability of Clavinova pianos as close as possible to that of a grand piano, including the escapement mechanism that prevents the hammers from dampening the vibrations of the strings after they are struck, and counterweights* embedded in each key to balance the weights of the keys against the action, enhancing sensitivity to the softest, most delicate articulation. The pedals and key materials also affect playability — after all, they are what a pianist touches to play the instrument. Thus, Yamaha replicated the grand piano experience with highly absorbent, slip-resistant key materials and realistic-feeling pedals that alter the tone as expected.

* Featured on the CLP-785 / 795GP, CVP-809 / 809GP



Acoustic piano hammers



Clavinova GrandTouch™ keyboard





Some GrandTouch-S keyboard also features wooden keys

GrandTouch™ / GrandTouch-S™ keyboards

Yamaha's latest keyboard action features a broad dynamic range and faithful response to every nuance of touch that puts a wide expanse of tone — from delicate to bold — at the pianist's fingertips. The highly consistent grand piano hammers replicate the pleasing response felt when the hammers strike the strings, enabling precise control of the tone. Highly absorbent synthetic-ivory white keys and synthetic-ebony black keys prevent slipping even during extended play and feel just like those of a grand piano.

Moreover, the GrandTouch™ keyboard features wooden keys.* With the longest-ever pivot length on a Yamaha digital piano, the keys are easy to play from the edge to the back. Finally, Yamaha's 88-key Linear Graded Hammers are the only digital piano technology that provides a distinct touch for each key with the same weight and return for the corresponding key on a grand piano.

GRANDTOUCH
KEYBOARD



CVP-809GP

NWX / GH3X keyboards

Natural Wood X (NWX) and Graded Hammer 3X (GH3X) keyboards capture the touch of a grand piano by replicating the natural key return and response created by the weight of the hammers, and making the bass keys feel heavy while the treble keys feel light. Each key is equipped with three sensors for repeated note performance very close to that of a grand piano. The sensors lend an animated feel to the repeated notes and airy trills that appear in Für Elise and many other songs.

NWX keyboard features wooden keys that showcase Yamaha's expertise with wood for pianos. Just as with grand piano keyboards, the solid wood is cut from the very best parts of well-dried lumber, making the keys, making the keys more resistant to warping than keyboards made of laminated wood. The wooden texture and structure of the keys create a more grand piano-like feel.

The GP Response Damper Pedal

Using the damper pedal subtly alters the nature of a piano's sound and is essential to providing the pianist with all the necessary expressive tools to convey their musical vision.

Clavinova digital pianos feature a damper pedal that continually detects depression depth and allows half-pedalling, which lets players make minute adjustments to pedal depression and return, changing the depth and character of their piano sound.

High-end models feature the GP Response Damper Pedal, which offers a grand piano-style resistance curve, starting light to the touch and growing heavier as the pedal is depressed further. This allows players to become accustomed to the nuances of delicate pedalling.

Featured on the CLP-775 / 785 / 795GP / 809 / 809GP



SENSITIVITY — GRAND EXPRESSION MODELING

The interaction and interplay of the hammers, dampers, and strings inside a grand piano respond to the subtlest nuances of the pianist's touch, creating a limitless range of tonal expression. Touch refers to the pianist's control, not only of intensity (softness/loudness) in playing and releasing the keys, but also of the speed and depth with which the keys are pressed.

The Grand Expression Modeling introduced in the CLP-700 Series translates the widely varied input from the pianist's fingers into the same limitless tonal variation of a grand piano.

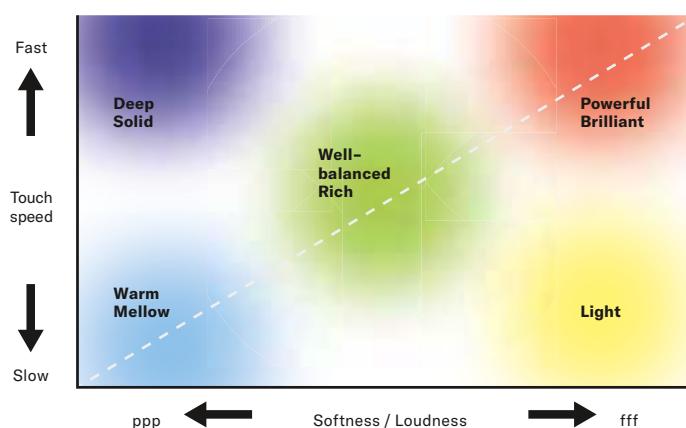
This makes it possible to vary the output by playing the keys to different depths and with different speeds, even when using techniques such as trills or legato or emphasizing the melody over the accompaniment. Grand Expression Modeling excels at faithfully reproducing the output expected of these techniques in many well-known songs. In Debussy's "Clair de Lune," a loose touch creates the faint tone that makes the melody stand out more crisply.

In Liszt's "Un Sospiro," the accompanying arpeggios accent the melody without overwhelming it, and varied expression of the melody gives it the same quality as vocals. In the last of the Chopin nocturnes, trills, legato, and other delicate techniques where fingers seem to float over the keys deliver the airy, smooth tonal expression required.

Playing such pieces on a highly expressive piano helps the pianist learn various techniques and experience the same joy of expression as a painter, but through sound.



Tonal Variation



This image is for illustration purposes only

A man with a beard, wearing a light blue button-down shirt and dark trousers, is seated and playing a white upright piano. He is wearing large, white, over-ear headphones. His hands are positioned on the keyboard, and he appears to be focused on his playing. The background is a simple, light-colored wall with a decorative plant visible behind him.

Sound creation is vital for breathing life into digital pianos and it starts with the sampling of grand piano sounds. Acoustic pianos are highly sensitive instruments; their sound and resonance change along with minute changes in temperature, humidity, and other environmental elements.

Yamaha CFX / Bösendorfer Imperial voices

Another sampled concert grand is the Imperial, the top model of Bösendorfer, a time-honoured Viennese piano brand with an ardent following. The Imperial is known for its abundance of colour and natural, warm feeling.

Yamaha faithfully reproduces the idiosyncrasies of these concert grand pianos by carefully recording the entire tonal range of each of the 88 keys, making minute adjustments to capture the most harmonious tones each piano has to offer.

One of the allures of the grand piano is the sympathetic resonance created by the vibration of the entire instrument. Clavinova pianos elaborately reproduce this rich sympathetic resonance through a groundbreaking technology called Virtual Resonance Modeling (VRM). VRM creates a richly varied sound by simulating the complex sympathetic tones created when the vibrations of the strings are propagated to the soundboard and other strings, corresponding to the timing and intensity of key playing and pedalling.

Das Diagramm zeigt einen Querschnitt durch den Korpus eines Klaviers. Die Beschriftungen weisen auf folgende Teile hin:

- Saiten Resonanz
- Dämpfer Resonanz
- Gehäuse Resonanz
 - Rahmen
 - Resonanzboden

BINAURAL SAMPLING / STEREOPHONIC OPTIMIZER FOR HEADPHONES

Binaural sampling is a method of sampling in which special microphones are placed on a mannequin's head in the same positions as the pianist's ears to capture piano sounds the way that they sound in reality.

We chose this method to create the ambience and full, natural resonance of acoustic pianos in Clavinova pianos. This makes pianists feel as though they are sitting at a grand piano even when they play with headphones on.

The experience is so pleasant that they forget they are wearing headphones, no matter how long they continue to play.

On CLP-700 Series* pianos, binaural sampling was used for the Bösendorfer Imperial as well as the Yamaha CFX. Yamaha achieves higher-definition binaural sound with a specially developed mannequin head and model ears used for the recording.

We also developed the Stereophonic Optimizer function to achieve the same effect for the piano effects. Stereophonic Optimizer technology replicates the natural diffusion of sound in headphones nearly as closely as binaural sampling for the piano voices other than the CFX and Imperial.

* CLP-735



Moreover, when pianists return to playing with modern piano voices, the Clavinova offers new insights into how to express things on a modern piano.

It is our hope that providing classical piano students with the opportunity to play fortepianos deepens their understanding of the musicality and historical background of the all-time great composers.

Grand Acoustic Imaging

When a pianist plays a grand piano, they cause the entire body of the instrument to reverberate, and become enveloped in the colourful tones created from the combination of various acoustic elements in the air around them.

The pianist becomes immersed in the diffusing sound and reverberation. The high-end models* of the CLP-700 Series delivers this pleasant feeling through Grand Acoustic Imaging.

The latest acoustic design and measuring technology create the same sound image and sound field of a grand piano despite the compact size of the digital piano.

We optimally balanced and placed the bass, mid, and treble speakers to achieve the sound radiation and centroid characteristic of grand pianos so that each and every tone played through the speakers sounds like it was emitted from the proper place on an actual grand piano.

* Binaural sampling of the Bösendorfer Imperial is not included on the CLP-725. The fortepianos shown in the picture are from the collections of at the Hamamatsu Museum of Musical Instruments.

Classic fortepiano voices

The fortepiano is a period instrument played by Mozart, Beethoven, Chopin, and other composers before the modern piano was developed.

We equipped the latest CLP-700 Series* pianos with as many as four fortepiano voices in the hope that playing a period instrument would allow pianists to feel the composers' intent more intuitively by following the notation on the sheet music of centuries-old songs more faithfully.

The sounds of fortepianos decay much more quickly than modern pianos, and the composers' intent in terms of timing and length becomes clearer when pedalling a fortepiano according to the sheet music.





The speaker placement and balancing replicates the sensation of the hammers striking the strings in front of the pianist, and the reverberations from the strings dissipating away from them. We also used a transducer to achieve the full reverberation of sounds emitted by the entire grand piano soundboard, replicating the sense of depth experienced when playing an acoustic grand piano.

The cases of the grand piano models are shaped to simulate the radiation of grand piano sounds from the speakers, creating a lush listening environment for the audience as well.

* Featured on the CLP-775 / 785 / 795GP

Spruce Cones and Twisted Flare Ports

Drawing from our experience in building both acoustic pianos and high-end speakers, Yamaha CLP-785 / 795GP and CVP-809 / 809GP speaker cones use pulp from the same spruce wood used to make acoustic piano soundboards. The result is a more natural, piano-like attack to the sound that is more piano-like when you play the



keys.



The Twisted Flare Port, which is used on CVP-809 / 809GP, offers a clearer bass sound. The flared and gently twisted shape evenly diffuses the airflow through the port.

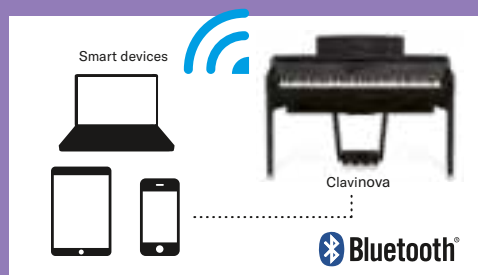
Compared to a conventional port, the Twisted Flare Port reduces air turbulence noise, contributing to clear and accurate low-frequency reproduction.

GENERAL FEATURES

Connect wirelessly with Bluetooth® audio

You can play music through the audio system in the Clavinova by using a Bluetooth®-enabled smart device. You can stream audio data such as mp3 files, as well as audio from apps. You can enjoy playing along with any songs on your smart device.

Featured on the CLP-745 / 775 / 785 / 765GP / 795GP, CVP-805 / 809 / 809GP



Multi-track song recorder

The recording function featured in Clavinova digital pianos allows you to record your performances* with a single touch, which is useful when you want to review your playing objectively. Additionally, you can record up to 16 tracks** for simultaneous playback, so different hands can be recorded separately or overdub parts with different Voices.

* Recordings are made in MIDI format, and can also, be recorded to USB flash memory.

Compatible software is required for playback of recorded data on a computer

** Two tracks on the CLP-725

USB Audio Recorder

Record performances to USB flash memory and create audio files* you can save and play back on a computer, share with friends or create a CD.

Not available on the CLP-725 / CSP-150 / CSP-170

* Data is saved in WAV format. The CVP-805 / 809 / 809GP also allow MP3 format

APPS & SERVICES

APPS AND ONLINE SERVICES — USE THEM TOGETHER TO EXPAND YOUR MUSICAL HORIZONS

An additional Clavinova benefit: discover new ways to enjoy music through apps and online services. A wide selection of song and sheet music files are at your fingertips.

Play your favourite songs right away

SmartPianist can analyse songs on your smart devices to create chord progressions for you to follow. On the CSP and CVP Series, SmartPianist features an “Audio To Score” function that creates piano accompaniment scores automatically.

A variety of piano lesson pieces

CLP CSP CVP

SmartPianist can playback both preset and commercially available songs, and allows you to simply listen to them or play along. It also displays notation for hundreds of built-in MIDI songs.

Easy voice selection and Easy settings

CLP CSP

Use this app to configure voices for a range of instruments, including pianos, organs and guitars, and saxophones, and also adjust parameters such as reverberation in performance venues and other factors that affect the sound of the instrument. You can also configure transpose, tuning, pedal, and acoustic setting easily and intuitively.

Voice selection and configurable functions may differ depending on the model.

Regarding compatible devices for using SmartPianist app, please check our homepage.

Customise your own backing band

CSP

Link applications with the CSP Series when using Styles for easy selection of backing tracks in a range of genres that includes rock, pop, and jazz. You can even customize the tempo and combinations of instruments used in accompaniments.

GREAT BENEFITS ALWAYS SOUND GOOD



5-YEAR GUARANTEE

Register your Yamaha Clavinova series CLP, CSP and CVP digital piano and take advantage of the 5-year warranty.



Scan the QR-code to extend your guarantee

SmartPianist is compatible with Clavinova

Function	CLP	CSP	CVP*
Piano Room	Yes	Yes	–
Voice	Yes	Yes	–
Style	–	Yes	–
Song	Yes	Yes	Yes
Score View	Yes	Yes	Yes
Chord Analysis	Yes	Yes	Yes
Audio to Score	–	Yes	Yes
Stream Lights / Guide Lamps	–	Stream Lights	Guide Lamps

* Except CVP-701

Connection	CLP	CSP	CVP
Connect wirelessly using Wi-Fi*	Optional Wireless LAN Adaptor UD-WL01	Included Wireless LAN Adaptor UD-WL01	Optional Wireless LAN Adaptor UD-WL01
Connect wirelessly using Bluetooth® MIDI	Yes**	–	–
Connect using a cable (iOS device)	Apple USB-C Digital AV Multiport Adaptor or Apple USB-C VGA Multiport Adaptor, and USB Cable		
	Apple USB-C Digital AV Multiport Adaptor or Apple USB-C VGA Multiport Adaptor, and USB Cable	Apple Lightning to USB Camera Adaptor and USB Cable	Apple Lightning to USB Camera Adaptor and USB Cable
Connect using a cable (Android device)	USB Conversion Adaptor and USB Cable		

* Except CLP-725

** Except CLP-725 / 735

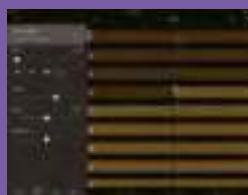


SmartPianist

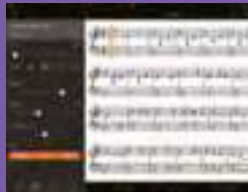
SmartPianist is a free application for use with Yamaha digital pianos that can analyse any commercially available songs you own and then display chord progressions and/or piano accompaniment scores for them. This single application will help you enjoy life with your piano a whole lot more — it can even be used to configure instruments with ease!

SmartPianist is not compatible with CVP-701

CLP CSP CVP



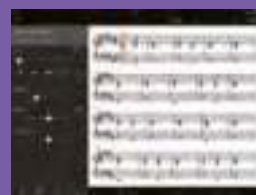
Chord progression screen



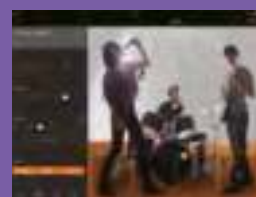
Audio to Score screen



CSP CVP



Audio to Score screen



See the SmartPianist app page on the Yamaha website for information on compatible operating systems and devices.

flowkey



The flowkey application offers lessons specially designed for beginners or those who haven't played for a long time to practice at their own pace. flowkey is available on a paid subscription basis, and can be used with any musical instrument.

flowkey is offered by flowkey GmbH

You'll be amazed at how quickly using the flowkey piano learning app with your Yamaha digital piano will let you learn to play your favourite music. flowkey provides a music score as well as video for you to check fingering with. For CSP users, flowkey will even synchronize with Stream Lights when a smart device* with flowkey installed is connected to their instrument. Get started today to discover piano arrangements tailored to your level and play your first song within minutes!

* Stream Lights synchronization is only available with iOS devices



S P E C I F I C A T I O N S

CLP Series

Model Name		CLP-785	CLP-775	CLP-745	CLP-735	CLP-725	CLP-795GP	CLP-765GP	
Keyboard	Number of Keys	88							
	Type	GrandTouch™ Keyboard: wooden keys (white only), synthetic ebony and ivory key tops, escapement			GrandTouch-S™ Keyboard: synthetic ebony and ivory keytops, escapement		GrandTouch™ Keyboard: wooden keys (white only), synthetic ebony and ivory key tops, escapement	GrandTouch-S™ Keyboard: synthetic ebony and ivory key tops, escapement	
	Touch Sensitivity	Hard2, Hard1, Medium, Soft1, Soft2, Fixed					Hard, Medium, Soft, Fixed	Hard2, Hard1, Medium, Soft1, Soft2, Fixed	
	88-key Linear Graded Hammers	YES			-		YES	-	
	Counterweight	YES	-					YES	-
Voices	Piano Sound	Yamaha CFX, Bösendorfer Imperial							
	Binaural Sampling	Yes (CFX Grand and Bösendorfer only)				Yes (CFX Grand only)	Yes (CFX Grand and Bösendorfer only)		
	Piano Effect	VRM, Grand Expression Modeling, Key-Off Samples, Smooth Release							
	Polyphony (max.)	256							
	Voice Selection	53 Voices + 14 Drum / SFX Kits + 480 XG Voices	38			10	53 Voices + 14 Drum / SFX Kits + 480 XG Voices	38	
	Dual / Split / Duo	YES / YES / YES							
Pedals	Number of Pedals	3: Damper (with Half-pedal function), Sostenuto, Soft							
	GP Response Damper Pedal	YES			-		YES	-	
Effects	Types	Reverb: 6 / Chorus: 3 / Brilliance: 7 + User / Effect: 12				Reverb: 4	Reverb: 6 / Chorus: 3 / Brilliance: 7 + User / Effect: 12		
	Intelligent Acoustic Control (IAC)	YES							
	Stereophonic Optimizer	YES							
Songs (MIDI)	Preset Songs	25 Voice Demo Songs + 50 Classics + 303 Lesson Songs	21 Voice Demo Songs + 50 Classics + 303 Lesson Songs			10 Voice Demo Songs + 50 Classics	25 Voice Demo Songs + 50 Classics + 303 Lesson Songs	21 Voice Demo Songs + 50 Classics + 303 Lesson Songs	
	No. of Songs		250			1	250		
	Record of Tracks		16			2	16		
USB Audio Recorder	Recording Time (max.)	80 minutes / Song				-	80 minutes / Song		
	Recording / Playback	WAV (44.1kHz, 16-bit, stereo)				-	WAV (44.1kHz, 16-bit, stereo)		
Strage	Internal Memory	approx. 1.4 MB				approx. 960 KB	approx. 1.4 MB		
	External Memory	USB Flash Drive				-	USB Flash Drive		
Display	Type / Size	Type: Full Dots LCD / Size: 128x 64 dots				-	Type: Full Dots LCD / Size: 128x 64 dots		
	Language	English, Japanese				-	English, Japanese		
Panel	Type	Touch sensors			Buttons		-	Touch sensors Buttons	
	Language	English							
Other functions	Rhythms	20				-	20		
	Piano Room	YES				-	YES		
	Others	Metronome, Tempo Range, Transpose, Tuning, Scale Type, etc.				Metronome, Tempo Range, Transpose, Tuning, etc.	Metronome, Tempo Range, Transpose, Tuning, Scale Type, etc.		
Bluetooth® Audio / MIDI*		YES			-	YES			
Connectivity	USB TO DEVICE	YES			-		YES		
	USB TO HOST	YES			-		YES		
	Other Connectors	PHONES x 2 MIDI (IN / OUT / THRU) AUX PEDAL AUX IN (Stereo Mini) AUX OUT (L / L+R,R)	PHONES x 2 MIDI (IN / OUT / THRU) AUX IN (Stereo Mini) AUX OUT (L / L+R,R)			PHONES x 2	PHONES x 2 MIDI (IN / OUT / THRU) AUX PEDAL AUX IN (Stereo Mini) AUX OUT (L / L+R,R)	PHONES x 2 MIDI (IN / OUT / THRU) AUX IN (Stereo Mini) AUX OUT (L / L+R,R)	
Sound System	Amplifiers	(50W + 50W + 50W) x 2	(50W + 42W + 50W) x 2	(50W + 50W) x 2	30W x 2	20W x 2	(50W + 50W + 50W) x 2	(50W + 42W) x 2	
	Speakers	(16cm + 8cm + 2.5cm dome) + transducer) x 2, Spruce Cone Speaker	(16cm + 8cm + 5cm + transducer) x 2	(16cm + 8cm) x 2	16cm x 2	12cm x 2	(16cm + 8cm + 2.5cm dome) + transducer) x 2, Spruce Cone Speaker	(16cm + 5cm) x 2	
	Speakers BOX	YES			-		YES	-	
Power Supply	AC Adaptor	PA-500				PA-300C		PA-500	
	Power Consumption	60W (When using PA-500 AC adaptor)	50W (When using PA-500 AC adaptor)	40W (When using PA-500 AC adaptor)	18W (When using PA-300C AC adaptor)	12W (When using PA-300C AC adaptor)	60W (When using PA-500 AC adaptor)	30W (When using PA-500 AC adaptor)	
Cabinet	Colour Variation	Polished Ebony / Black / Polished White	Polished Ebony / Black / Dark Rosewood / Dark Walnut / White Ash / White			Polished Ebony / Black / Dark Rosewood / White	Polished Ebony / Polished White		
	Key Cover Style	Folding	Sliding						
	Music Rest	Yes, Music Rest Clips							
	Headphones Hanger	YES							
Size (W x D x H) (with Music Rest Raised / Lid up)		CLP-785PE / 785PWH: 1,467 x 477 x 1,029 mm [57-3 / 4" x 18-3 / 4" x 40-1 / 2"] CLP-785B: 1,461 x 476 x 1,027mm [57-1 / 2" x 18-3 / 4" x 40-7 / 16"]	CLP-775PE: 1,466 x 465 x 1,137 mm [57-11/16" x 18-5/16" x 44-3/4"] CLP-775B / 775R / 775DW / 775WA / 775WH: 1,461 x 465 x 1,136 mm [57-1/2" x 18-5/16" x 44-3/4"]	CLP-745PE: 1,466 x 459 x 1,097 mm [57-11 / 16" x 18-1 / 16" x 43-3 / 16"] CLP-745B / 745R / 745DW / 745WA / 745WH: 1,461 x 459 x 1,096 mm [57-1 / 2" x 18-1 / 16" x 43-1 / 8"]	CLP-735PE: 1,466 x 459 x 1,082 mm [57-11 / 16" x 18-1 / 16" x 42-5 / 8"] CLP-735B / 735R / 735DW / 735WA / 735WH: 1,461 x 459 x 1,081 mm [57-1 / 2" x 18-1 / 16" x 42-9 / 16"]	CLP-725PE: 1,353 x 415 x 1,004 mm [53-1/4" x 16-5/16" x 39-1/2"] CLP-725B / 725R / 725WH: 1,350 x 414 x 1,003 mm [53-1 / 8" x 16-5/16" x 39-1/2"]	CLP-795GP / 795GPWH: 1,430 x 1,237 x 1,577 mm [56-5 / 16" x 48-11 / 16" x 62-1 / 16"]	CLP-765GP / 765GPWH: 1,430 x 1,147 x 1,400 mm [56-5 / 16" x 45-3 / 16" x 55-1 / 8"]	
Weight		CLP-785PE / 785PWH: 87 kg [191 lb, 13 oz] CLP-785B: 84 kg [185 lb, 3 oz]	CLP-775PE: 74 kg [163 lb, 2 oz] CLP-775B / 775R / 775DW / 775WA / 775WH: 71 kg [156 lb, 8 oz]	CLP-745PE: 63 kg [138 lb, 14 oz] CLP-745B / 745R / 745DW / 745WA / 745WH: 60 kg [132 lb, 4 oz]	CLP-735PE: 60 kg [132 lb, 4 oz] CLP-735B / 735R / 735DW / 735WA / 735WH: 57 kg [125 lb, 11 oz]	CLP-725PE: 45 kg [99 lb, 3 oz] CLP-725B / 725R / 725WH: 43 kg [94 lb, 13 oz]	CLP-795GP / 795GPWH: 126 kg [277 lb, 13 oz]	CLP-765GP / 765GPWH: 106 kg [233 lb, 11 oz]	
Optional Accessories**		Headphones: HPH-150 / HPH-100 / HPH-50 Foot Switches: FC4A / FC5 (CLP-785) Foot Controller: FC7 (CLP-785) USB Wireless LAN Adaptor: UD-WL01				Headphones: HPH-150 / HPH-100 / HPH-50 Foot Switches: FC4A / FC5 (CLP-795GP) Foot Controller: FC7 (CLP-795GP) USB Wireless LAN Adaptor: UD-WL01			

* Availability of Bluetooth® Audio / MIDI functions varies by country.

** Availability of optional accessories varies by area. Additional items (e.g. UD-WL01, Internet access) may be required to access certain functions.

The cabinet colours and finishes shown in this brochure may appear different than those on the actual products. Specifications and appearance are subject to change without prior notice.

iPad / iPhone, microphones etc. not included where shown in images. iPad, iPhone and iPod touch are trademarks of Apple Inc., registered in the U.S. and other countries.

GrandTouch™ is a trademark of Yamaha Corporation.

SPECIFICATIONS

CSP Series

Model Name		CSP-170	CSP-150
Key-board	Number of Keys	88	
	Type	NWX (Natural Wood X) Key-board with synthetic ebony and ivory keytops, escapement	GH3X (Graded Hammer 3X) Keyboard with synthetic ebony and ivory keytops, escapement
	Touch Sensitivity	Hard2, Hard1, Medium, Soft1, Soft2	
	88-key Linear Graded Hammers	-	
Voices	Counterweight	-	
	Piano Sound	Yamaha CFX, Bösendorfer Imperial	
	Binaural Sampling	YES (Yamaha CFX Voice only)	
	Piano Effect	VRM, Key-Off Samples, Smooth Release	
	Polyphony (max.)	256	
	Preset	692 Voices + 29 Drum / SFX Kits	
	Number of Voices	692 Voices + 29 Drum / SFX Kits	
	VRM Voices	14	
Pedals	Super Articulation2 Voices	-	
	Super Articulation Voices	113	
	Compatibility	XG, GS (for Song playback), GM, GM2	
	Half Pedal / Functions	YES / Sustain, Sostenuto, Soft, Glide, Style Start / Stop, Volume, etc.	
Effects	GP Response Damper Pedal	-	
	Types	Reverb (58 Preset)	
	Reverb / Chorus / Others	-	
	Effect Types	Master EQ (5 Preset + User), Intelligent Acoustic Control (IAC), Stereophonic Optimizer	
Styles	Vocal Harmony	44 Preset	
	Dual (Layer) / Split	YES	
	Preset	470 (396 Pro Styles, 34 Session Styles, 4 Free Play Styles, 36 Pianist Styles)	
	Style Selection	-	
Songs (Audio)	File Format	-	
	Fingering	Chord Detection Area Full, Chord Detection Area Lower	
	Style Control	INTRO x 1, ENDING x 1, MAIN x 4, FILL IN x 4	
	Playlist (max.)	-	
Songs (MIDI)	Music Finder (max.)	-	
	One Touch Setting (OTS)	-	
	Recording Time (max.)	Depending on the Smart Device	
	Data Format (Recording / Playback)	Recording: WAV / AAC Playback: Supported format by the Smart Device	
Functions	Functions	Time Stretch, Pitch Shift, Melody Suppressor	
	Preset	403	
	Number of Preset Songs	403	
	Number of Tracks	16	
Bluetooth® Audio*	Data Capacity	Depending on the Smart Device	
	Compatible Data Format	Recording: SMF (Format 0), Playback: SMF (Format 0 & 1), XF	
	Guide Lamps / Stream Lights	Stream Lights (4 steps)	
	Audio to Score	YES	
Storage and Connectivity	Piano Room	YES	
	Registration Memory	YES	
	Display Out	-	
	Internal Memory	Depending on the Smart Device	
Sound System	External Memory	-	
	USB Connection	USB TO DEVICE, USB TO HOST, iPad	
	Other Connectivity	PHONES x 2, MIC (Input Volume, Mic / Line In), MIDI (IN / OUT / THRU), AUX IN (Stereo mini), AUX OUT (L / L+R, R), AUX PEDAL	
	Amplifiers	(45W + 45W) x 2	
Control Interface	Speakers	(16cm x 8cm) x 2	
	Others	Acoustic Optimizer	
	Display	Depending on the Smart Device	
	Type	-	
Cabinet	Size	-	
	Touch Screen	-	
	Language	26 Languages (English, Japanese, German, French, Spanish, etc.)	
	Panel	English	
Dimensions (W x D x H) (with the Music Rest Raised / Lid up)	Key Cover (Sliding), Music Rest, Music Clips	-	
	CSP-170PE:	1,418mm x 466mm x 1,040mm [55-13 / 16" x 18-6 / 16" x 40-15 / 16"]	
	CSP-150PE:	1,418mm x 466mm x 1,040mm [55-13 / 16" x 18-6 / 16" x 40-15 / 16"]	
	CSP-170B / 170WH:	1,412mm x 465mm x 1,040mm [55-85" x 18-5 / 16" x 40-15 / 16"]	
Weight	CSP-150B / 150WH:	1,412mm x 465mm x 1,040mm [55-85" x 18-5 / 16" x 40-15 / 16"]	
	CSP-170PE:	69.0 kg [152 lb, 2 oz]	
	CSP-150PE:	61.0 kg [134 lb, 8 oz]	
	CSP-170B / 170WH:	67.0 kg [147 lb, 12 oz]	
Optional Accessories**	CSP-150B / 150WH:	58.0 kg [127 lb, 14 oz]	
	Headphones: HPH-150 / 100 / 50, Foot Switches: FC4A / FC5, Foot Controller: FC7, USB Wireless LAN Adaptor: UD-WL01, USB Wireless MIDI Adaptor: MD-BT01 / UD-BT01	-	
	Headphones: HPH-150 / 100 / 50, Foot Switches: FC4A / FC5, Foot Controller: FC7, USB Wireless LAN Adaptor: UD-WL01, USB Wireless MIDI Adaptor: MD-BT01 / UD-BT01	-	
	Headphones: HPH-150 / 100 / 50, Foot Switches: FC4A / FC5, Foot Controller: FC7, USB Wireless LAN Adaptor: UD-WL01, USB Wireless MIDI Adaptor: MD-BT01 / UD-BT01	-	

CVP Series

CVP-809GP	CVP-809	CVP-805	CVP-701
88			
GrandTouch™ Keyboard: wooden keys (white only), synthetic ebony and ivory keytops, escapement			GH3X (Graded Hammer 3X) Keyboard: synthetic ivory keytops, escapement
Hard2, Hard1, Medium, Soft1, Soft2			
YES			-
YES			-
Yamaha CFX, Bösendorfer Imperial			
YES (Yamaha CFX Voice only)			-
VRM, Key-Off Samples, Smooth Release			
256			
1,605 Voices + 58 Drum / SFX Kits + 480 XG Voices	1,315 Voices + 49 Drum / SFX Kits + 480 XG Voices	777 Voices + 29 Drum / SFX Kits + 480 XG Voices	
17	14	10	
36	-		
301	227	49	
XG, GS (for Song playback), GM, GM2			
Sustain, Sostenuto, Soft, Glide, Song Play / Pause, Style Start / Stop, Volume, etc.			
YES			
Reverb (65 Preset + 30 User), Chorus (106 Preset + 30 User), Insertion Effect (358 Preset + 30 User), Variation Effect (358 Preset + 30 User)			
Reverb (65 Preset + 30 User), Chorus (106 Preset + 30 User), Insertion Effect (322 Preset + 30 User), Variation Effect (322 Preset + 30 User)			
Master Compressor (5 Preset + 30 User), Master EQ (5 Preset + 30 User), Part EQ (27 Parts), Intelligent Acoustic Control (IAC), Stereophonic Optimizer			
Master Compressor (5 Preset + 30 User), Master EQ (5 Preset + 30 User), Part EQ (27 Parts), Intelligent Acoustic Control (IAC), Stereophonic Optimizer			
54 Preset + 60 User			
YES			
675	525	310 (253 Pro Styles, 21 Session Styles, 36 Pianist Styles)	
Style File Format (SFF), Style File Format GE (SFF GE)			
Single Finger, Fingered, Fingered On Bass, Multi Finger, AI Fingered, Full Keyboard, AI Full Keyboard			
INTRO x 3, MAIN VARIATION x 4, FILL x 4, BREAK, ENDING x 3			
2,500 Records			
-			
1,200 Records			
4 for each Style			
80 minutes / Song			
WAV (44.1kHz, 16bit, stereo), MP3 (MPEG-1 Audio Layer-3)			
Time Stretch, Pitch Shift, Vocal Cancel			
50 Classics + 303 Lesson Songs + 50 Popular			
65			
16			
approx. 3 MB / Song			
Recording: SMF (Format 0), Playback: SMF (Format 0 & 1), XF			
Guide Lamps (1 step)			
YES***			
YES			
YES (8 buttons)			
YES (By using a commercially available USB display adaptor)			
YES			
approx. 2 GB			
USB Flash Drive			
USB TO DEVICE x 2, USB TO HOST			
PHONES x 2, MIC (Input Volume, Mic / Line In), MIDI (IN / OUT / THRU), AUX IN (Stereo mini), AUX OUT (L / L+R, R), AUX PEDAL			
(40W + 30W + 20W) x 2 + 80W			
(16cm + 5cm + 2.5cm [dome]) x 2 + 20cm			
Spruce Cone Speaker, Twisted Flare Port			
TFT Color LCD			
800 x 480 dots 9 inch			
800 x 480 dots 7 inch			
480 x 272 dots 4.3 inch			
YES			
English, Japanese, German, French, Spanish, Italian			
English			
Key Cover (Folding), Music Rest, Music Clips			
Key Cover (Sliding), Music Rest			
CVP-809GP / 809GPWH:	CVP-809PE / 809PWH:	CVP-805PE:	CVP-701PE:
1,430 mm x 1,236 mm x 1,554 mm [56-1 / 4" x 24-1 / 8" x 40-1 / 2"]	1,429 mm x 612 mm x 1,028 mm [56-1 / 4" x 24-1 / 8" x 40-1 / 2"]	1,423 mm x 593 mm x 1,027 mm [56-0" x 23-3 / 8" x 40-7 / 16"]	1,355 mm x 596 mm x 1,066 mm [53-3 / 8" x 23-7 / 16" x 42"]
CVP-809B:	CVP-805B:	CVP-701B:	
1,426 mm x 612 mm x 1,027 mm [56-1 / 8" x 24-1 / 8" x 40-7 / 16"]	1,420 mm x 592 mm x 1,026 mm [56-15 / 16" x 23-5 / 16" x 40-3 / 8"]	1,352 mm x 595 mm x 1,065 mm [53-1 / 4" x 23-7 / 16" x 41-15 / 16"]	
CVP-809GP / 809GPWH:	CVP-809PE / 809PWH:	CVP-805PE:	CVP-701PE:
125 kg [275 lb, 9 oz]	84 kg [185 lb, 3 oz]	84 kg [185 lb, 3 oz]	61.5 kg [135 lb, 9 oz]
CVP-809B:	CVP-805B:		
82 kg [180 lb, 12 oz]	80 kg [176 lb, 6 oz]		
Headphones: HPH-150 / 100 / 50, Foot Switches: FC4A / FC5, Foot Controller: FC7, USB Wireless LAN Adaptor: UD-WL01, Wireless MIDI Adaptor: MD-BT01 / UD-BT01	Headphones: HPH-150 / 100 / 50, Foot Switches: FC4A / FC5, Foot Controller: FC7, USB Wireless LAN Adaptor: UD-WL01, Wireless MIDI Adaptor: MD-BT01 / UD-BT01	Headphones: HPH-150 / 100 / 50, Foot Switches: FC4A / FC5, Foot Controller: FC7, MIDI Interface: i-MX1, USB MIDI Interface: i-UX1, USB Wireless LAN Adaptor: UD-WL01	Headphones: HPH-150 / 100 / 50, Foot Switches: FC4A / FC5, Foot Controller: FC7, MIDI Interface: i-MX1, USB MIDI Interface: i-UX1, USB Wireless LAN Adaptor: UD-WL01

* Availability of Bluetooth® Audio function varies by country. ** Availability of optional accessories varies by area. *** Available when using SmartPianist app
Some functions in the CSP series specification chart are limited without the SmartPianist.



Yamaha's Environmental Efforts

Yamaha Corp. and Yamaha Motor Co., Ltd. are utilizing planted trees in Indonesia under a five-year plan called The Yamaha Forest that began in 2005. The second phase of this activity will continue for five years from 2010. The Yamaha Forest is an effort that contributes to regional society through environmental conservation based on planted forests and support for education in Indonesia, where the two companies have production and sales centers.

Headquarters and all factories have obtained environmental management ISO 14001 certification, and are conducting continuous environmental conservation activities.



For details please contact:



YAMAHA CORPORATION
P.O. BOX 1, Hamamatsu Japan